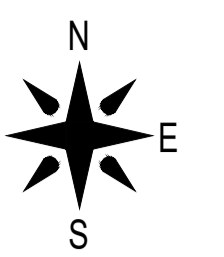


DO NOT SCALE

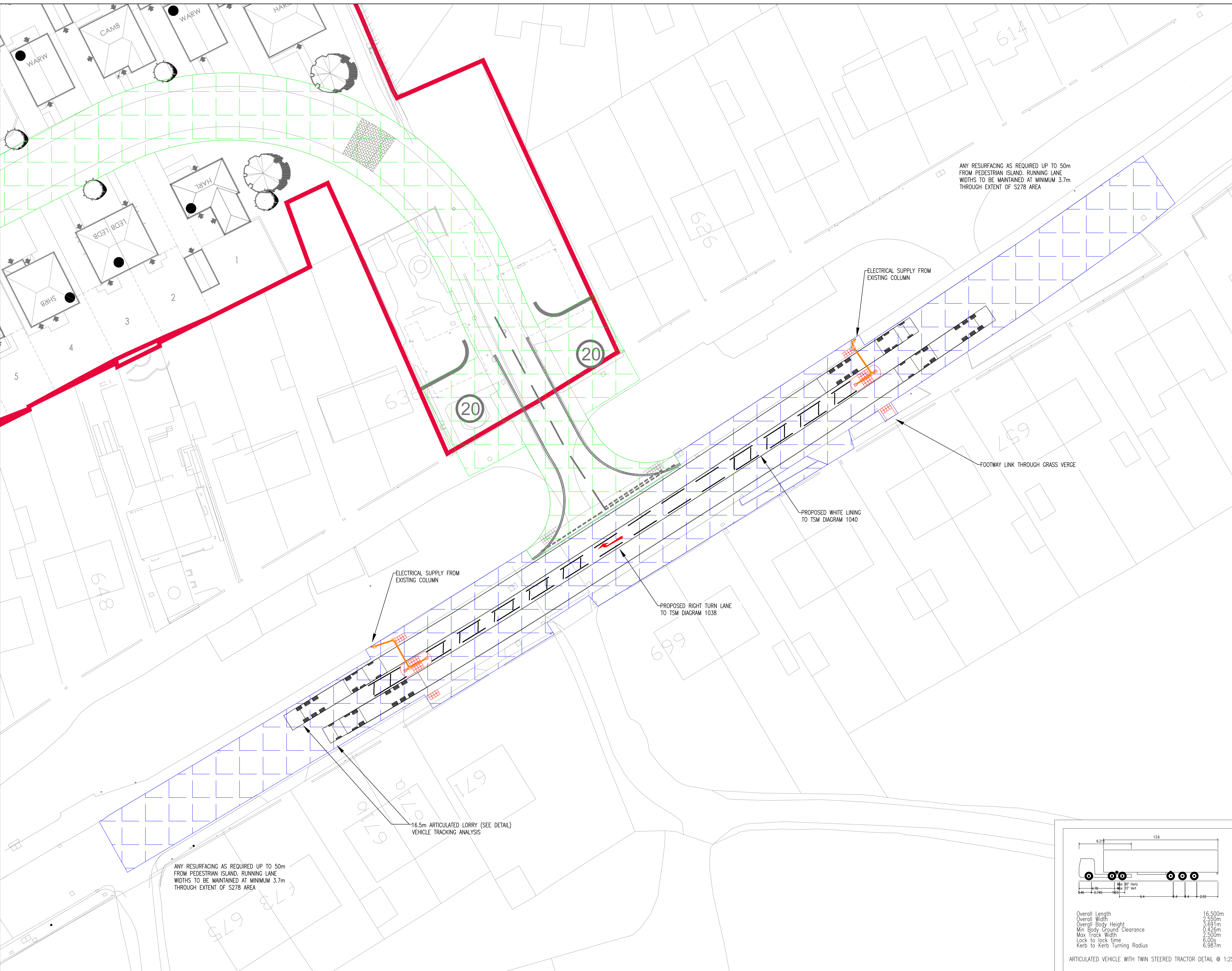


NOTES

1. TO BE READ IN CONJUNCTION WITH REDROW HOMES ADOPTABLE HIGHWAY DETAILS DWG NO. 4583-16-06-204
2. ALL DUCTS TO BE LAID WITH MINIMUM COVER AS PER NUJG GUIDELINES
3. SURFACING SPECIFICATION REQUIREMENT IS HOT ROLLED ASPHALT (30% COARSE AGGREGATE WITH COATED CHIPPINGS) - ASSUME 25mm DEPTH BUT TO BE DETERMINED ON SITE FOLLOWING BREAK OUT OF EXISTING SURFACE COURSE
4. THE CONTRACTOR WILL CHECK ALL LOCATIONS PRIOR TO START ON SITE AND ANY QUERIES TO BE RAISED WITH REDROW ENGINEER
5. THE CONTRACTOR WILL MAKE ALLOWANCES AND CARRY OUT THE NECESSARY APPLICATIONS FOR ANY PERMITS AND TRAFFIC MANAGEMENT REQUIRED TO UNDERTAKE THE WORKS
6. LCC WILL BE RESPONSIBLE FOR ANY ELECTRICAL CONNECTIONS

KEY

- EXTENT OF SECTION 278 WORKS
- EXTENT OF SECTION 38 WORKS
- DROPPED KERB CROSSING POINTS COMPLETE WITH TACTILE PAVING
- START OF 20mph ZONE
- PEDESTRIAN REFUGE COMPLETE WITH TACTILE PAVING AND ILLUMINATED BOLLARD
- ORANGE ELECTRICAL DUCT (100mm DIAMETER IN CARRIAGEWAY CROSSING, 50mm DIAMETER IN FOOTPATH AND PEDESTRIAN ISLAND)
- GROUND BOX



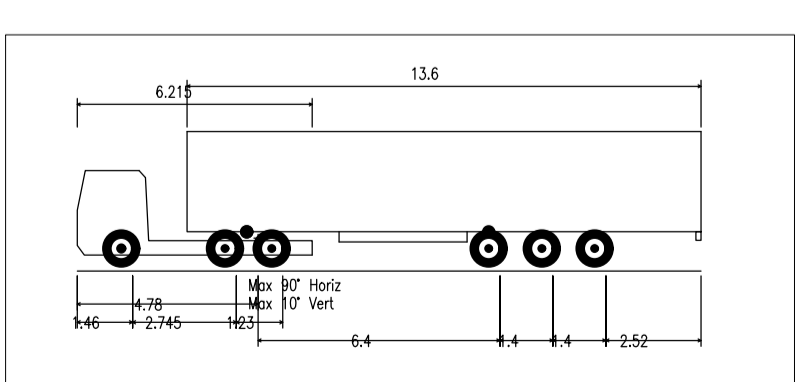
REV	DATE	BY	DESCRIPTION	APPROVER
C	APRIL 2022	JN	REVISED TO LCC COMMENTS	MAL
B	AUGUST 2021	JN	EXTENT OF S278 BOUNDARY SHOWN	MAL
A	JULY 2021	JN	REVISED TO LCC COMMENTS	-
-	JULY 2021	JN	INITIAL ISSUE	-



Redrow House, Brunel Road, Wakefield 41 Industrial Estate, WF2 0XG
 Tel: +44 (0)1924 822 566 Fax: +44 (0)1924 822 599
 www.redrow.co.uk

WORKING NAME	WHITEHALL GRANGE
PROJECT	WHITEHALL ROAD NEW FARNLEY
TITLE	PROPOSED SECTION 278 WORKS

SCALE @ A1	1:250	DESIGNED BY	JN	APPROVED BY	MAL	DATE	JULY 2021
PROJECT No.	4583	DRAWING No.	4583-16-06-404	REV	C		



Overall Length 16.500m
 Overall Width 2.550m
 Overall Body Height 3.691m
 Min Body Ground Clearance 0.428m
 Max Track Width 2.500m
 Lock to lock time 6.00s
 Kerb to Kerb Turning Radius 6.987m

ARTICULATED VEHICLE WITH TWIN STEERED TRACTOR DETAIL @ 1:250

Redrow\H\Technical\Proposed\New Farnley\Drawings\Main\Site Engineering\4583-16-06-404-Rev C - S278 layout.dwg 22 Jul 2022 3:47pm